

DWX-53DC



Sophisticated Disc Changer with Smart Functions

SPECIFICATIONS

Millable material	Zirconia, Wax, PMMA, Gypsum, PEEK, PEKK, Glass fiber reinforced resin, Composite resin, CoCr sinter metal, Polycarbonate	
Loadable workpiece shape	Disc-type (with step)	Step section: 98.5 mm (3.88 in.) (diameter), 10±0.3 mm (0.39±0.0118 in.) (height) Body section: 95 mm (3.74 in.) (diameter), 35 mm (1.38 in.) max. (height)
	Pin-type	Pin diameter: 6 mm (0.24 in.)
Loadable workpiece weight	850 g or less	
Number of loadable adapters	6	
Operating speed	XY:~3,000 mm/min (~118 in./min) Z:~2,700 mm/min (~106 in./min)	
Spindle motor	Brushless DC motor	
Spindle rotating speed	6,000 to 30,000 rpm	
Rotary axis travel angle	A: ± 360°, B: ± 35°	
Number of milling burs housed	15	
Attachable milling bur	Shank diameter: 4 mm (0.16 in.), length: 40 to 55 mm (1.57 to 2.17 in.)	
Compatible compressed air	0.4 MPa	
Interface	USB	
Control command sets	RML-1, NC code	
Power requirements	100-240 VAC ± 10% 50/60Hz (overvoltage category II, IEC 60664-1), 2.8 A	
Power consumption	Approx. 250 W	
Operating noise	During operation: 70 dB (A) or less (when not cutting) During standby: 45 dB (A) or less"	
External dimensions	Width × depth × height: 598 × 763 × 831 mm (25.6 × 30.1 × 33.0 in.)	
Weight	120 kg (265 lb.)	
Installation environment	Indoor use at altitudes up to 2,000 m Temperature: 5 to 40°C (41 to 104°F), humidity: 35 to 80%RH (no condensation) Ambient pollution degree: 2 (as specified by IEC 60664-1) Short-term temporary overvoltage: 1,440 V, long-term temporary overvoltage: 490 V	
Included items	Power cord, USB cable, safety information, quick access guide, detection pin, automatic correction jig, torque screwdriver, T-shaped hexagonal screwdriver, L-shaped hexagonal wrench, collet attach-detachment jig, milling bur holders, milling bur positioner, regulator, barcode label, adapter, open edge adapter, adapter rack, pin-type workpiece adapter, milling bur, tablet holder, etc.	

System requirements for USB connection

Computer	A model preinstalled with Windows 11 (64-bit version), 10 (32-bit and 64-bit versions), or 8.1 (32-bit and 64-bit versions)
USB cable	Use the included USB cable. If you will connect a conversion cable, separately prepare a USB cable whose total length, including the length of the conversion cable, is 3 m (118. 11 in.) or less.

DGSHAPE BRAND PROMISE

DGSHAPE Corporation is a wholly owned subsidiary of Roland DG Corporation, established in 2017 to develop and market innovative fabrication technology worldwide. With 30 years' experience in innovative 3D design, DGSHAPE's core mission to "make innovation, make life better" is focused on delivering digital technologies that bring ideas to life, revolutionize business processes, and shape a better future.



DWX-53DC

Sophisticated Disc Changer with Smart Functions



Technology Transforming to Art



YOU ARE THE ARTIST

Technology Transforming to Art

Dental technicians create prostheses and dentures for patients, just like painters applying color by color. Each dental restoration is unique, exceptional, just like the most elaborate artwork.

They have the ability to create a perfect fit for the individual characteristics of the mouth. Their porcelain work pursuing authenticity and beauty.

In functionality and aesthetics, the power of dental technicians surpasses natural teeth.

"Automation" is not just the pursuit of efficiency; it is the technology to unlock the potential of human endeavor. The DWX-53DC, the latest disc changer model, enhances the value of "craftmanship" through intelligence and vitality – state-of-the-art digital technology and machine frame embodying "SMART" to unlock the next dimension. The unlimited world of creativity unfolds beyond its frame.





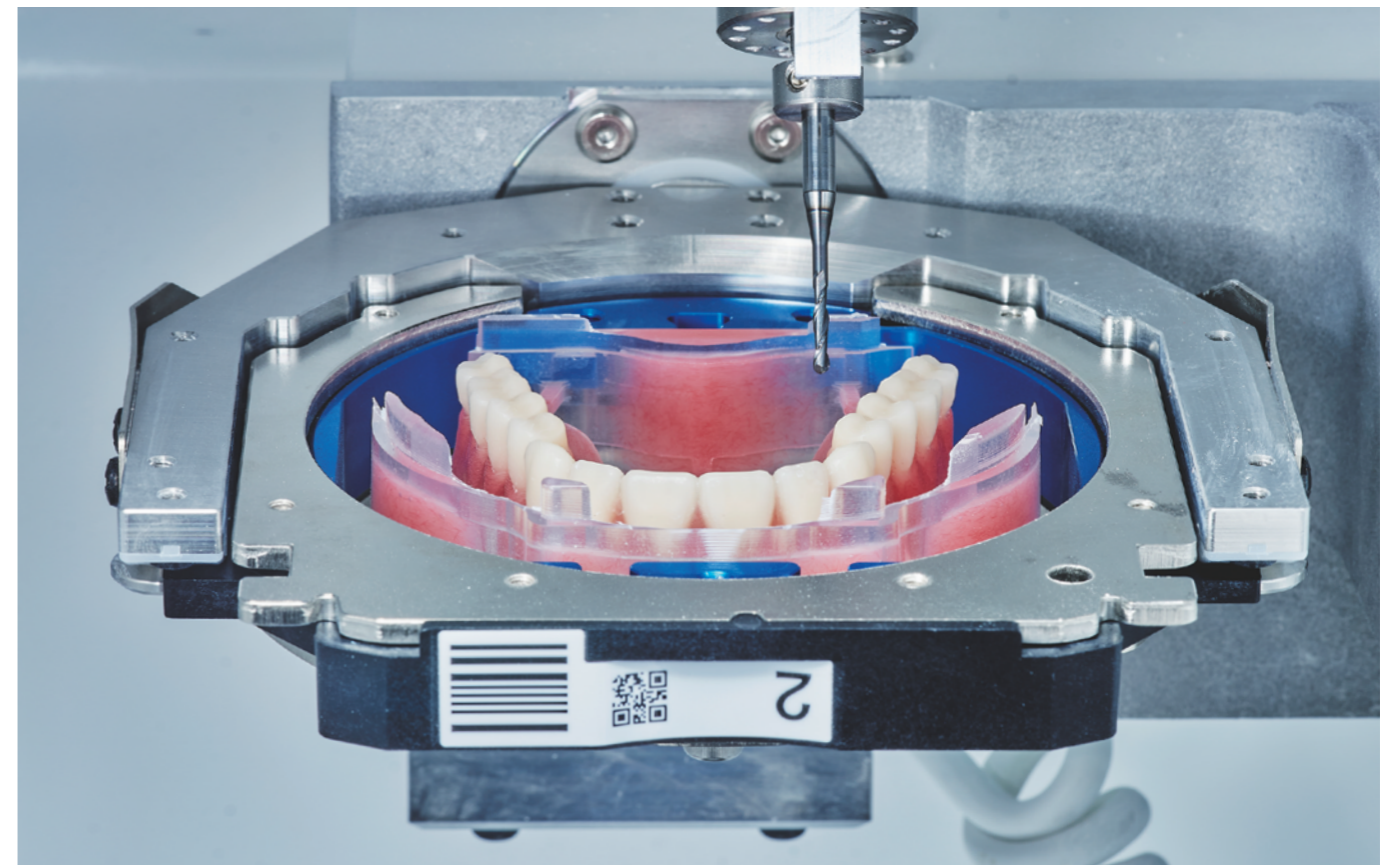
SMART DESIGN

Picture-Frame-Like Exterior Deceptively Compact Disc Changer

DWX-53DC is a beautifully crafted thoroughbred, concealing the power to realise the infinite potential of Dental Technicians, like an artist manipulating colors to create a masterpiece.

The sophisticated look adds creativity to your lab's atmosphere.

The dedicated holder allows you to install a touch panel to the front of the machine.



SMART SYSTEM

Best Milling Performance, Everyday

The improved rigidity provides complete stability.

Take calibration to the next level

- The built-in temperature sensor compensates for the machine's expansion and contraction caused by the temperature change.
- Additional manual calibration for exceptional results

The open edge adapter and B-axis ± 35 degrees milling enables supreme quality milling for anteriors.

High Speed PMMA Milling for Next Generation DIGITAL DENTURES

The improved rigidity and the newly designed spindle enables 4mm tool milling

- Our Digital Denture Solutions, CA-DK series, and genuine tools provide state-of-the-art milled digital dentures.



Learn more
<https://www.dgshape.com/digital-denture-solution/>

High-Speed Disc Change

Up to 100 ID labels for disc changing





SMART USABILITY

CLOUD × Built-In Camera

DGSHAPE CLOUD, our latest web-based application service, incorporating the built-in camera provide various information about the machine, including production data and recorded videos during milling. Our cloud service supports you in managing your DWX production, making a more efficient production plan, and maintaining your machines.

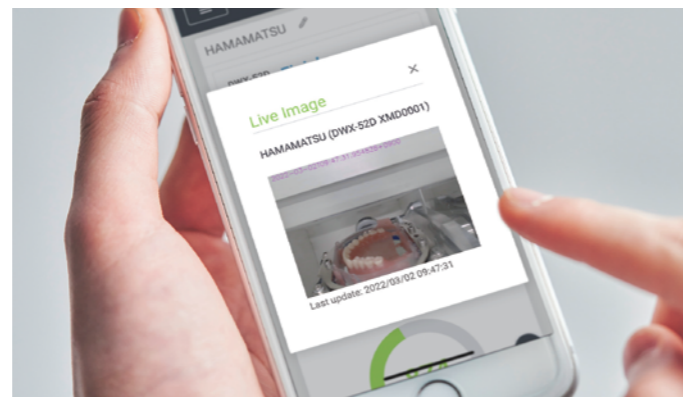


Learn more
<https://www.dgshape.com/cloud/>

Make Your Cleaning More Efficient

The high-power air blow program removes 99% of zirconia debris from the milled disc.

The dedicated extractor automatically cleans its filter at optimal intervals maintaining the cleaning power.



You deserve the latest and greatest!

Industry-leading post-sales support with DGSHAPE Care

DGSHAPE Care for you

Regular updates can keep your machine performing at its best and save you money in the long term. You deserve no less! Register your product right now!



<https://www.dgshape.com/dgshape-care/>



Want to learn more?

DWX-53DC web page

for request a quote, free demo, and further information:
<https://dgshape.com/dwx-53dc/>

